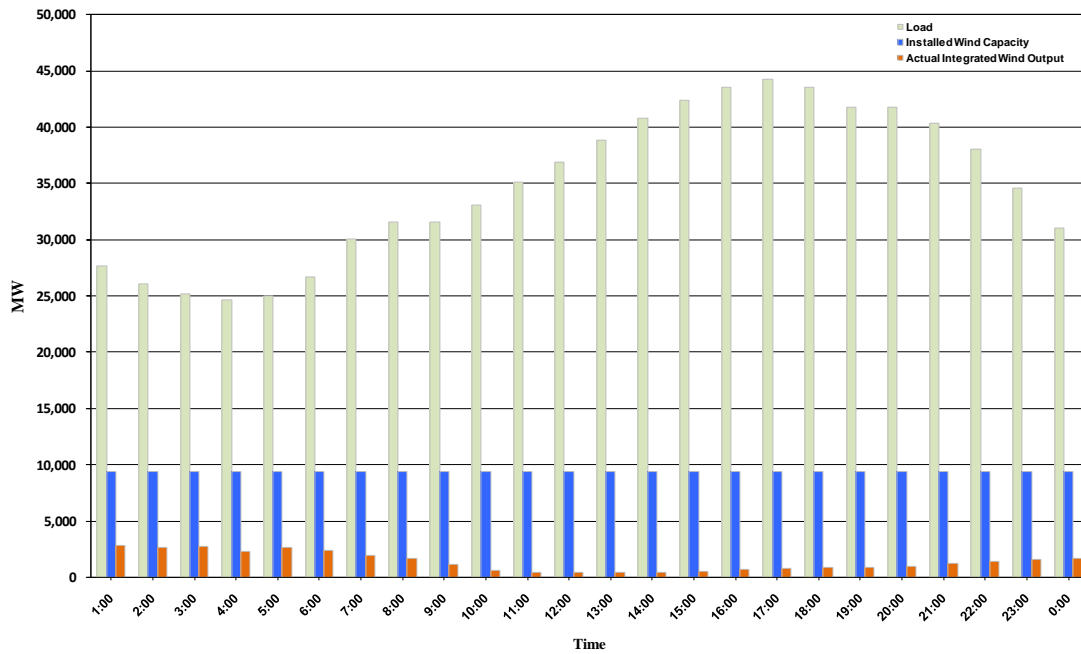




## ERCOT Grid Operations Wind Integration Report: 10/19/10

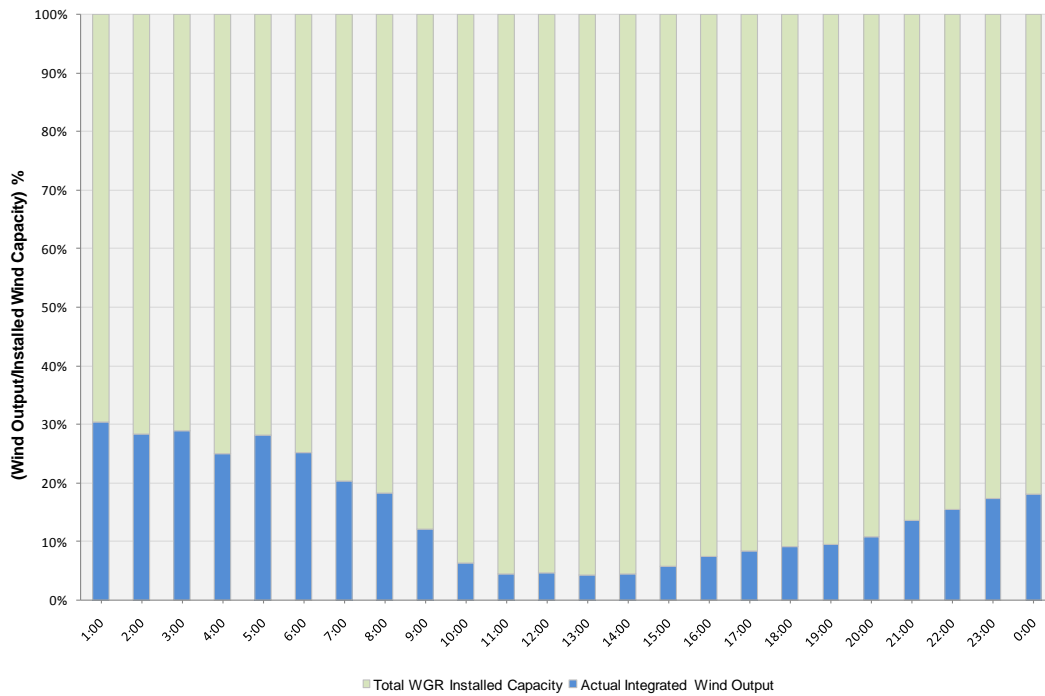
Peak Load	<b>44,218 MW</b>
Load Peak Hour	<b>17</b>
Wind Record 06/12/10	<b>7016 MW</b>
Max Wind value	<b>3400 MW</b>
Wind Peak Hour	<b>00:00:04</b>
Wind Integration %	<b>11.83</b>

Hourly Average Actual Load vs. Actual Wind Output  
10-19-2010

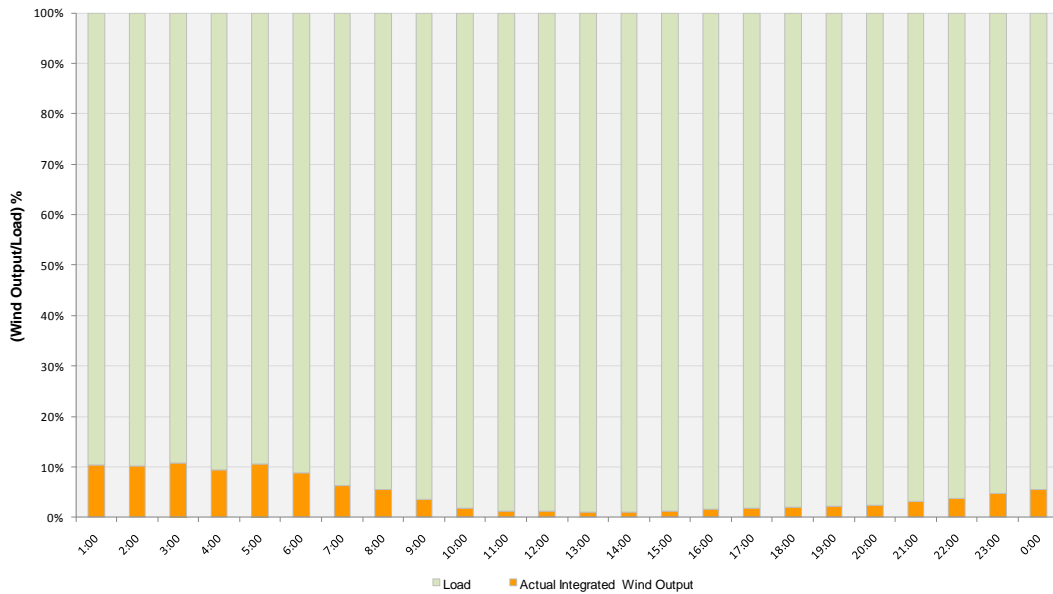




**Actual Wind Output as a Percentage of the Total Installed Wind Capacity**  
**10-19-2010**



**Actual Wind Output as a Percentage of the ERCOT Load**  
**10-19-2010**





## ERCOT Load vs. Actual Wind Output 10/12/10 - 10/19/10

